



LASEmaR 500®
is available in
SILVER, BLACK and GOLD.



LASEMAR500

LASEmaR 500® - TECHNICAL FEATURES

Wavelength (nm)	LBO - 532 nm
Preselected programmes	Advanced software with experienced protocols to be manually customized
Pulse duration (Ton-Toff)	Adjustable from 1 to 9000 msec - steps 1 ms
Number of pulses per sequence (single and pulsed mode)	From 1 to 100 - step one
Interval between pulse sequence (pulsed mode)	Adjustable 1 ms ÷ 10 sec
Operation mode	Single pulse mode - Pulsed mode - Continuous mode
Cooling system	Air cooling system combined with Peltier's Cells
Aiming beam	Red - 635 nm
Electrical power	125 - 220 VAC 50/60 Hz
Absorbed power	300 VA peak (adapted to domestic electric standard)
In compliance with	CE 0476 93/42/CEE – 2007/47/CE CEI EN 60601-1 CEI EN 60601-2-22 CEI EN 60601-1-4 CEI EN 60825-1 CEI EN 60601-1-2
Weight and dimensions	10 kg - 30,5 x 35 x 15,5 cm
Production	Made in Italy



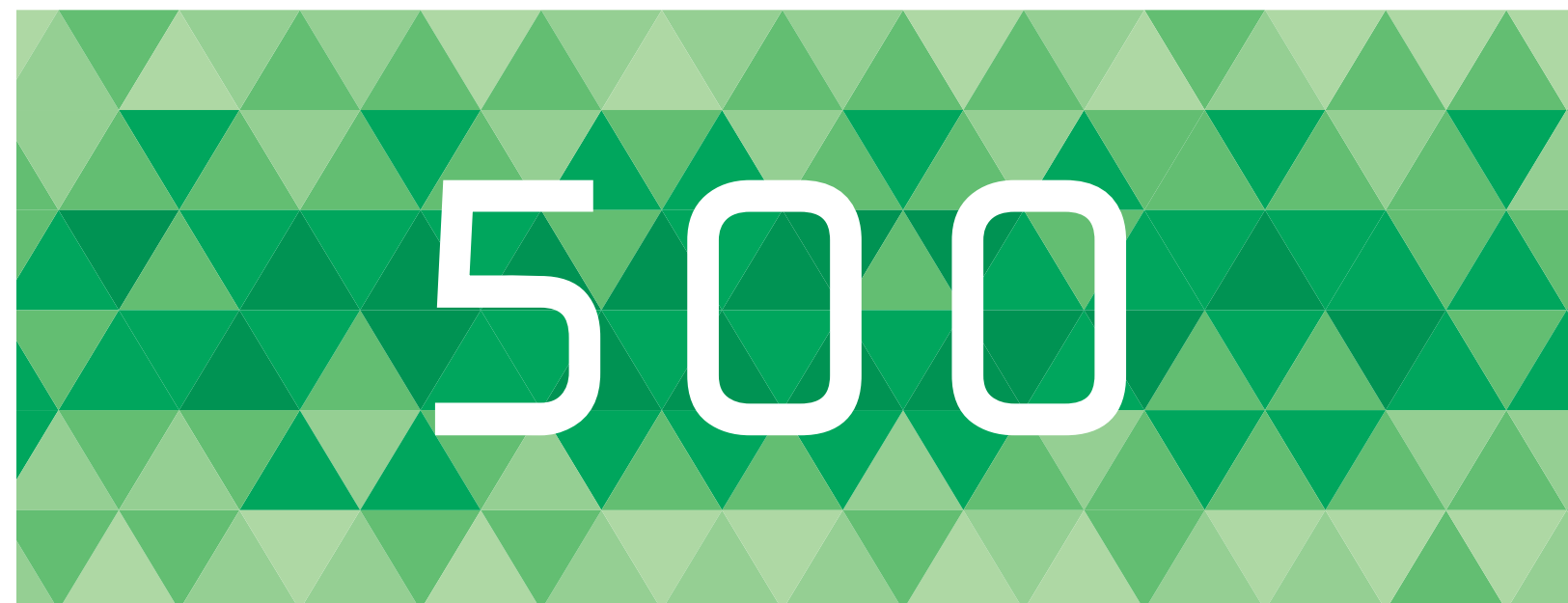
For more information about applications and accessories of LASEmaR 500®, scan the QR - code with your tablet or smartphone.



Eufoton Srl
Via Flavia 23/1 - 34148 Trieste - Italy
Ph. +39 040 9899082 - Fax +39 040 9890555
www.eufoton.com - info@eufoton.com



Before and after photographs used in this brochure are courtesy of: D. Cassuto MD, A. Crippa MD, O. Marangoni MD, L. Scrimali MD, F. Zini MD.



THE DELICATE LASER TO ERASE SKIN'S IMPERFECTIONS

VASCULAR LESIONS | PIGMENTED LESIONS | SKIN BENIGN LESIONS
SCARS, KELOIDS AND STRETCH MARKS | PHOTOREJUVENATION | DENTISTRY

LASEmaR 500® is the gold standard in the treatment of pigmented and vascular skin lesions, due to its extremely high absorption by oxy-haemoglobin and melanin.



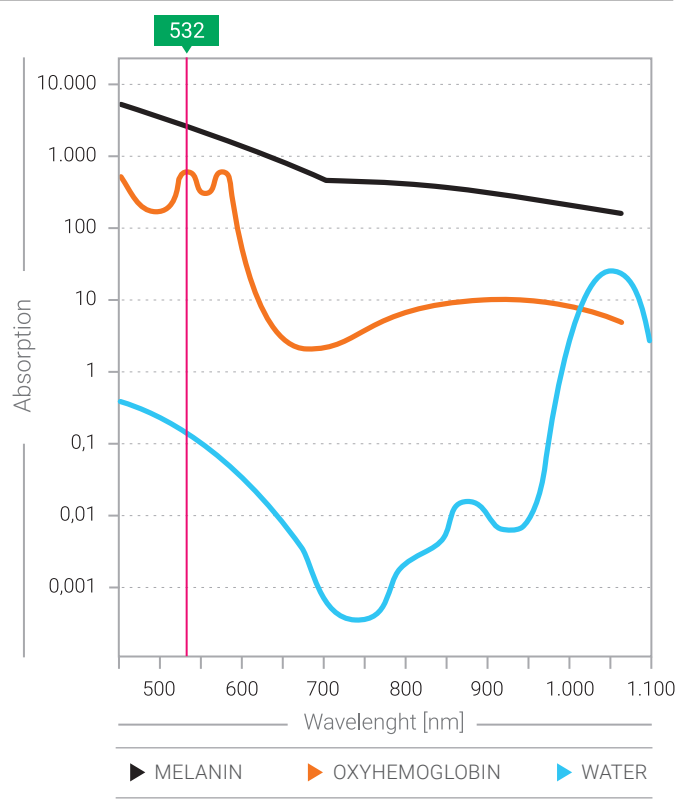
www.eufoton.com

FOR A SUPERFICIAL USE

LASEmaR 500® is the gold standard in the treatment of superficial and vascular skin lesions. Its diode of green wavelength (532nm) represents the maximum absorption by melanin and oxy - haemoglobin (see diagram at the right).

ADVANTAGES

- ▶ **Multifunctionality.** Changing its handpieces and preset protocols, the laser is immediately usable for all the different treatments.
- ▶ **Absolute portability** thanks to the smart trolley.
- ▶ **Software** - all the treatments are preset and adjustable thanks to the easy and intuitive software.
- ▶ **Security** - the software permits to set the target parameters, warning the operator of its achievement with different voiced feedbacks, without the necessity of diverting the attention from the patient.
- ▶ **Self diagnosis** - principal circuits are continuously supervised from a security system, which informs the operator of the eventual anomalies and whenever it is necessary, it stops automatically the emission.
- ▶ **Ordinary maintenance** is not necessary and there is no need of consumption materials.
- ▶ **Working capacity** of different hours per day without any problem of overheating.



APPLICATIONS

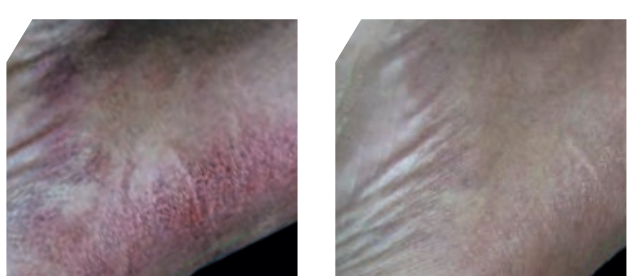
VASCULAR LESIONS

Red telangectasias, Couperose, Matting, Neovascularization, Rosacea, Port wine stains (PWS), Venous lake, Senile angiomas, (stellate, cherry).

FACIAL TELEANGECTASIAS: Before - after



MATTING: Before - after



PIGMENTED LESIONS

Freckles, Dermatitis, Café au lait stains, Papulosis nigra, Hyperkeratotic lesions, Poikiloderma of Civatte.

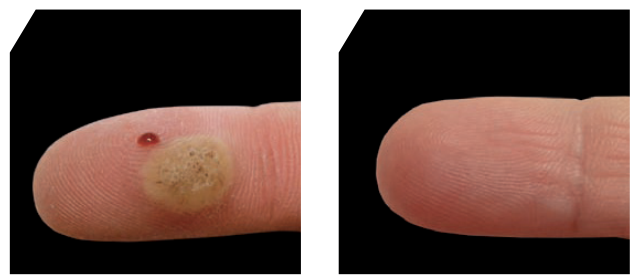
LENTIGO: Before - after



SKIN LESIONS

Warts, Keratosis, Acne in active phase.

WART: Before - after



ACCESSORIES

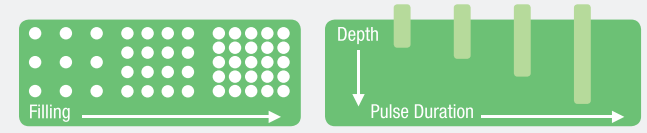
FRACTIONAL LIGHTSCAN 500®



It is the fractional laser system 532nm, which permits both extended vascular applications (angiomas and PWS) and dermoaesthetics (photorejuvenation, fine wrinkles, microectasias, epidermal pigmentation, enlarged pores, red stretchmarks, scars, keloids, acne in active phase). The result of photorejuvenation can be seen from the first treatment and the improvement continues also at the end of the whole cycle of treatments (3-5 following months) thanks to the creation of new collagen and the immediate reduction of the pigmented lesions. It is possible to treat different areas: face, neck, hands, abdomen, chest.

ADVANTAGES

- ▶ Scanning dimensions and density adjustable by the user.
- ▶ Linear or random scanning mode.
- ▶ Setting of impulses/fluency variable and possibility to repeat the impulse (sticking).
- ▶ **DPC** - Dynamic Pulse Control, maximization of the concept of selective photocoagulation for oxyhemoglobin and melanin (selective superficial and bloodless treatments).

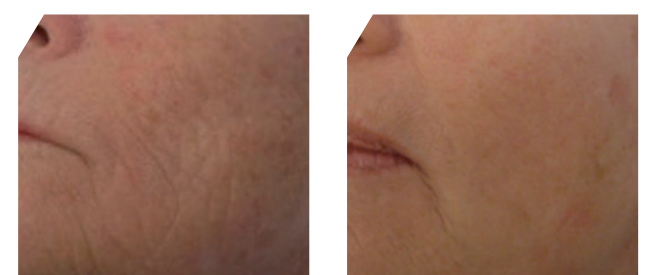


SCARS

Hyperkeratotic scars, vascularized keloids, red stretchmarks, red scars.

PHOTOREJUVENATION (face, chest, hands)

PHOTOREJUVENATION - LIGHTSCAN 500®: Before - after



ANGIOMA - LIGHTSCAN 500®: Before - after



DENTISTRY

LASEmaR 500® is used for surgical applications on soft tissues, endodontics, periodontics, hypersensitivity and conservative therapy.

VARIABLE FOCUS ZOOM 500 HANDPIECE

For transdermal applications (dermatological and vascular lesions and pigmentations) for the safe maintenance of the chosen spot. For contactless applications. Spot size: from 0,5 to 2 mm.

SURGICAL HANDPIECE

For applications in dermatosurgery in combination to the micro - optical fiber (0,2 mm spot).

MULTI - THERAPY SMALL HANDPIECE

Applications: photobiomodulation, cosmetic dentistry.

OTHER ACCESSORIES

POLARIZED LIGHT HELMET

For a perfect vision of superficial, vascular and pigmented lesions.

COOLING SYSTEMS

Different versions available: both fixed and portable.

EUFOTON VACUUM II

Surgical smoke evacuator complete of active carbon's filter and articulated arm

PROTECTIVE GLASSES AND EYE PROTECTORS

For the operator and the patient.

SMART TROLLEY

For a safe and easy transport.

METALLIC CART